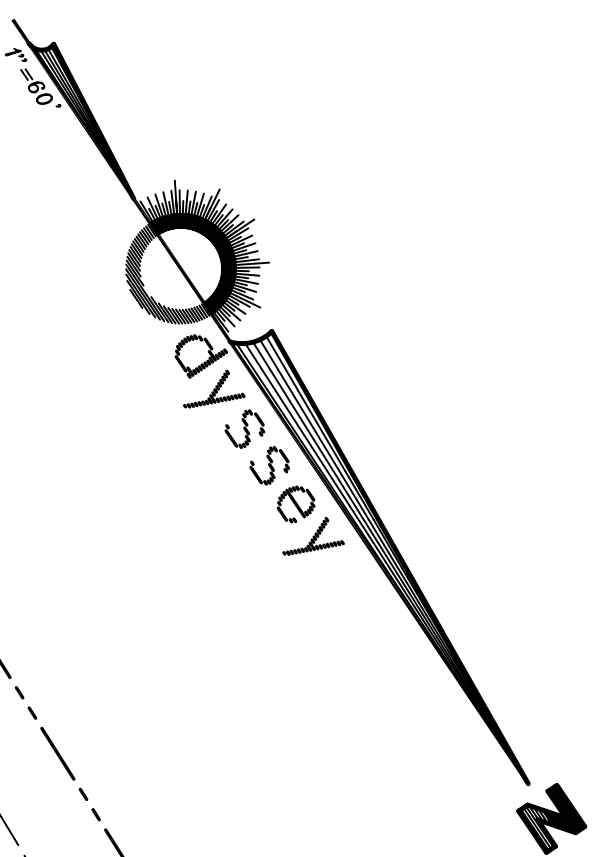


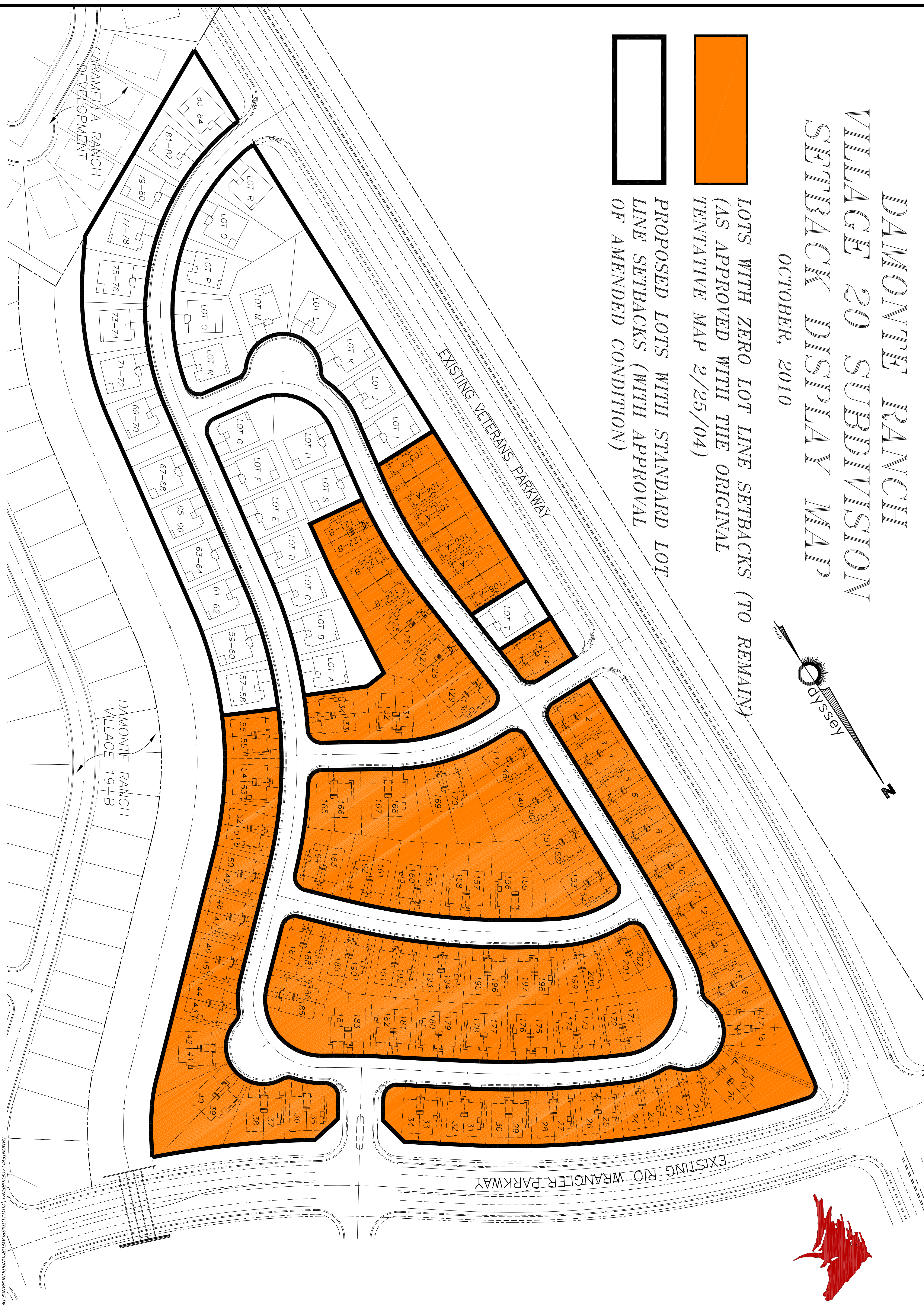
DAMONTE RANCH VILLAGE 20 SUBDIVISION SETBACK DISPLAY MAP

OCTOBER, 2010



LOTS WITH ZERO LOT LINE SETBACKS (TO REMAIN)
(AS APPROVED WITH THE ORIGINAL
TENTATIVE MAP 2/25/04)

**PROPOSED LOTS WITH STANDARD LOT
LINE SETBACKS (WITH APPROVAL
OF AMENDED CONDITION)**



REV.	DATE	DESCRIPTION	BY	APP'D

DATE: OCTOBER 2010
 DRAWN BY: ACAD2008
 DESIGNED BY: B.H.
 CHECKED BY: B.H.

APPLICATION TO AMEND APPROVED CONDITION
 DAMONTE RANCH ~ VILLAGE 20
SETBACK DISPLAY MAP
 WASHOE COUNTY NEVADA

895 ROBERTA LANE, SUITE 104, SPARKS, NV 89431
 (775) 359-3303 FAX (775) 359-3329

**ENGINEERING
INCORPORATED**

SCALE
 HORIZ. N.T.S.
 VERT. N.T.S.
 JOB NO.

SHEET
 SB-1
 1 OF 1

DAMONTE VILLAGE 20 ORIGINAL 2/25/04 TENTATIVE MAP 2/25/04 APPROVED CONDITION CHANGE 2/25/10